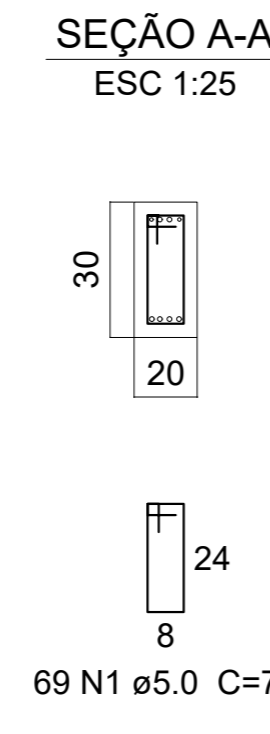
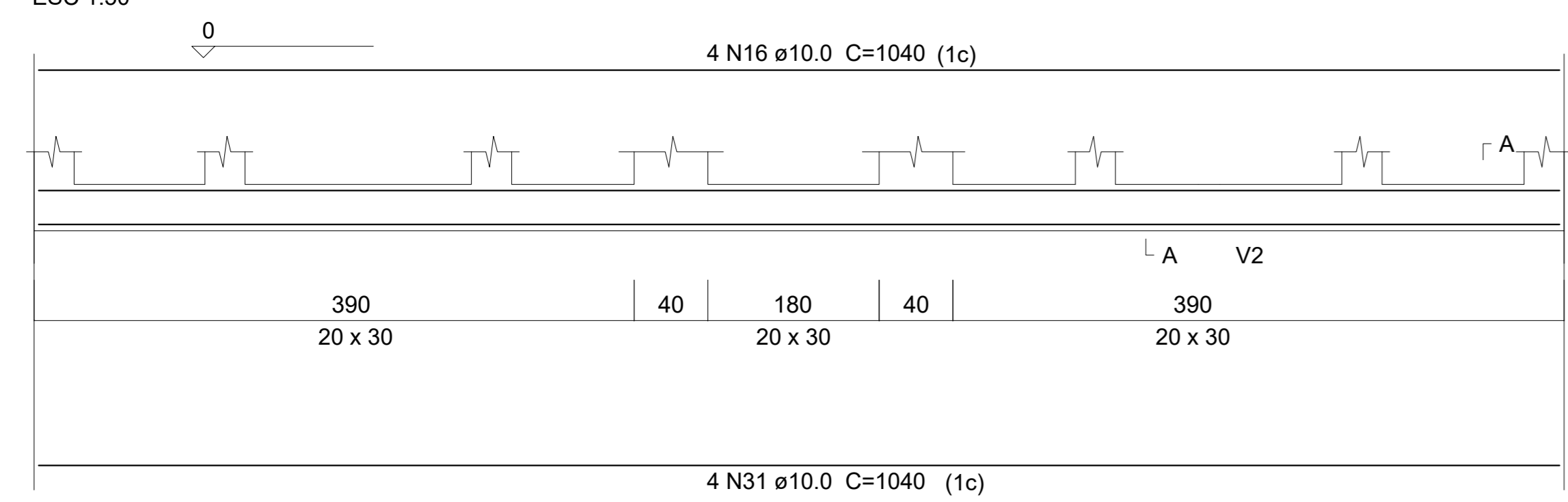
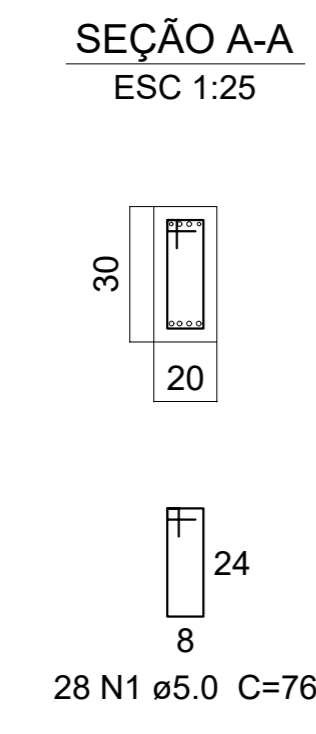
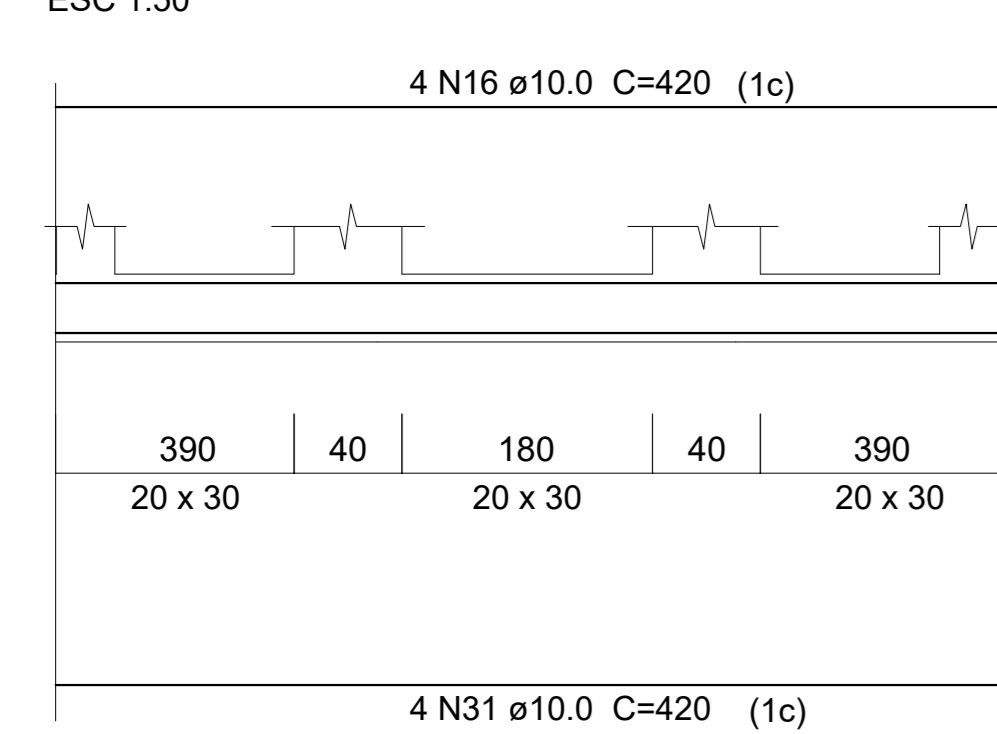


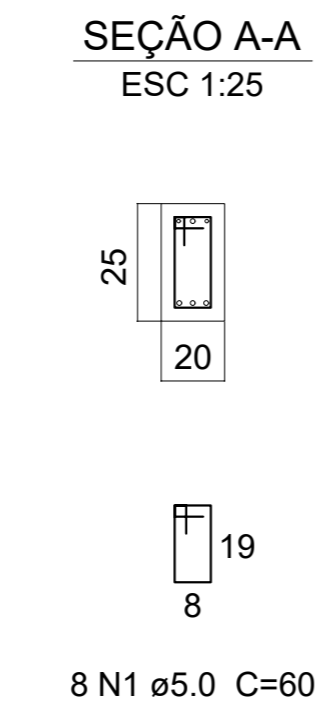
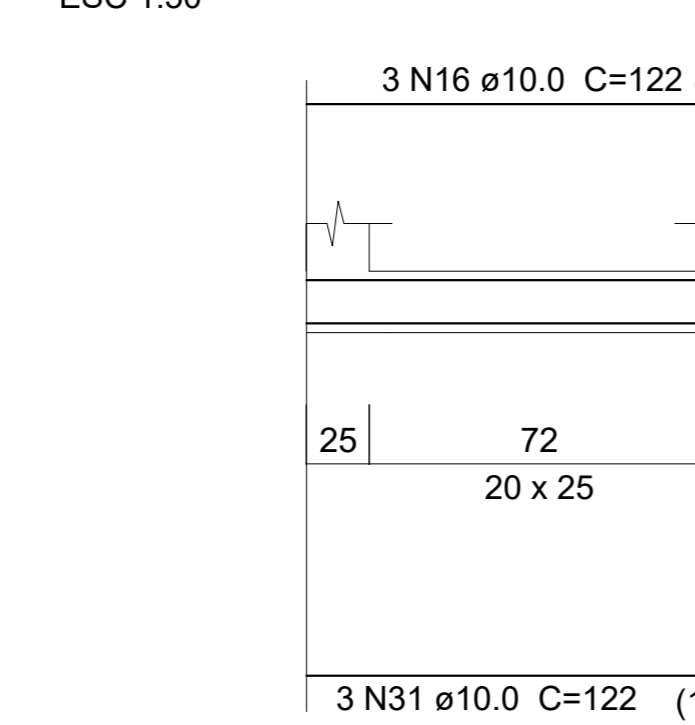
### V1 BALDRAME (20 x 30)



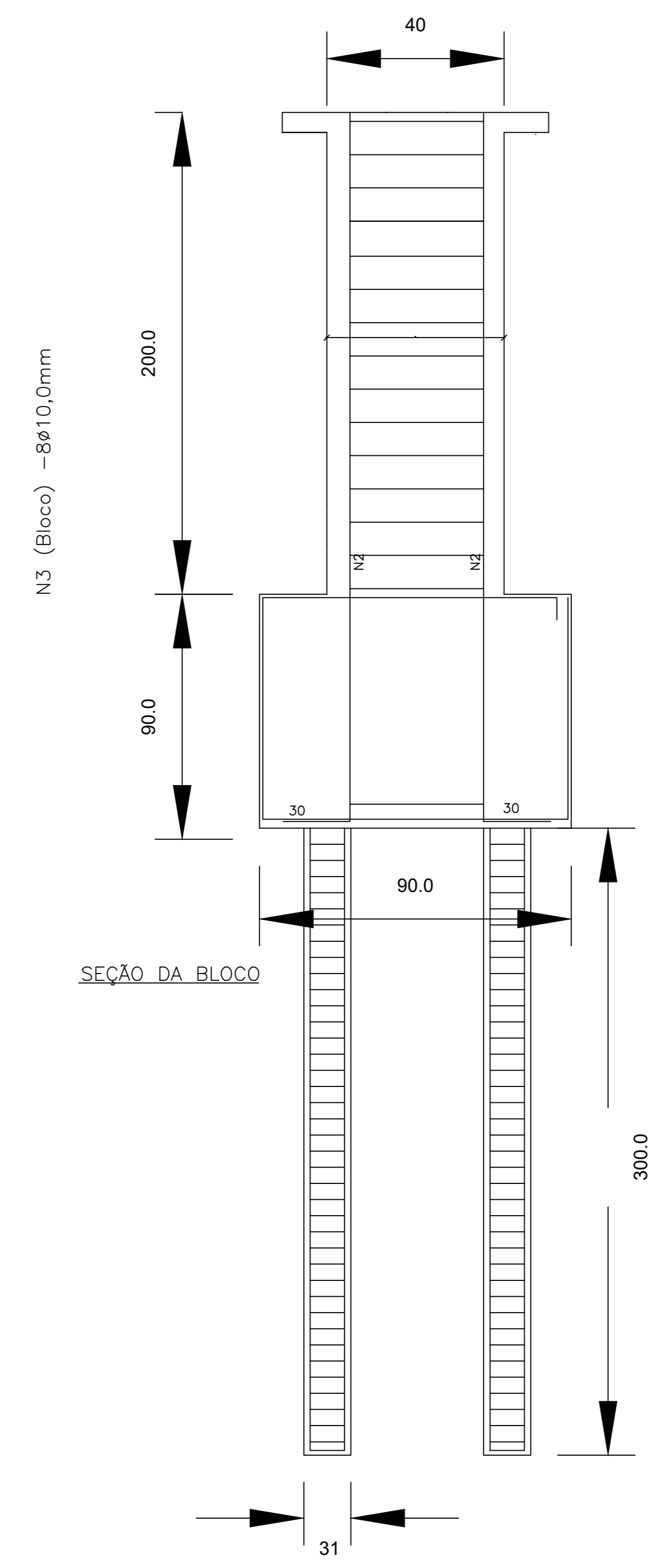
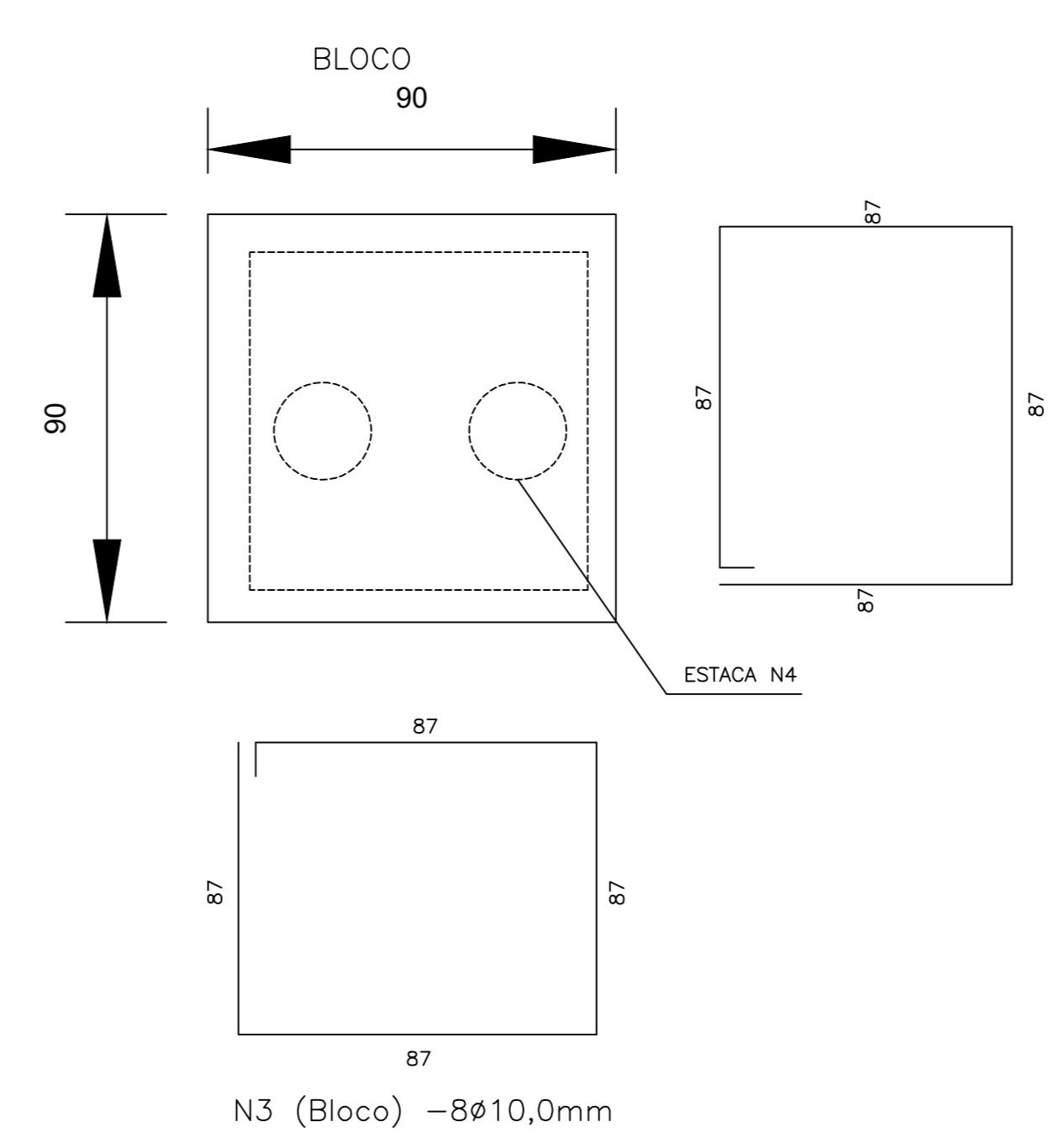
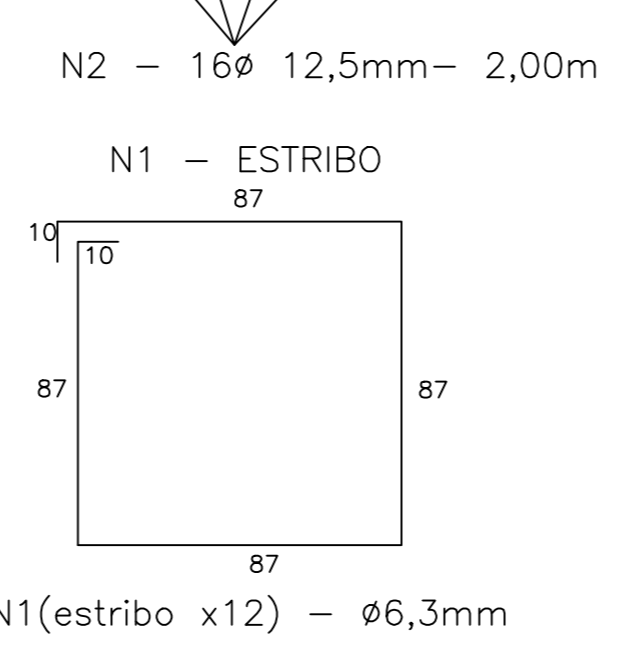
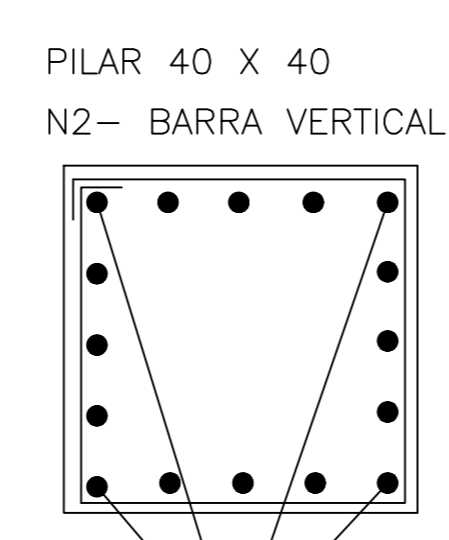
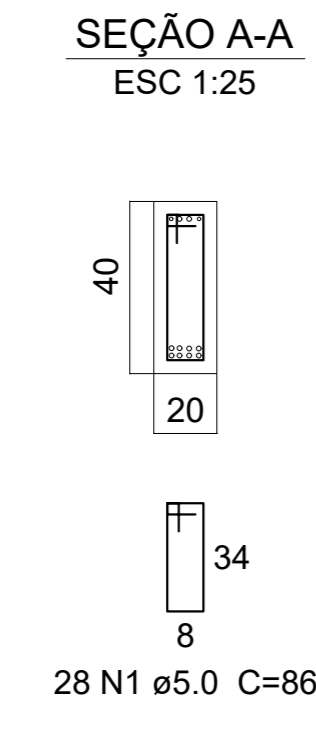
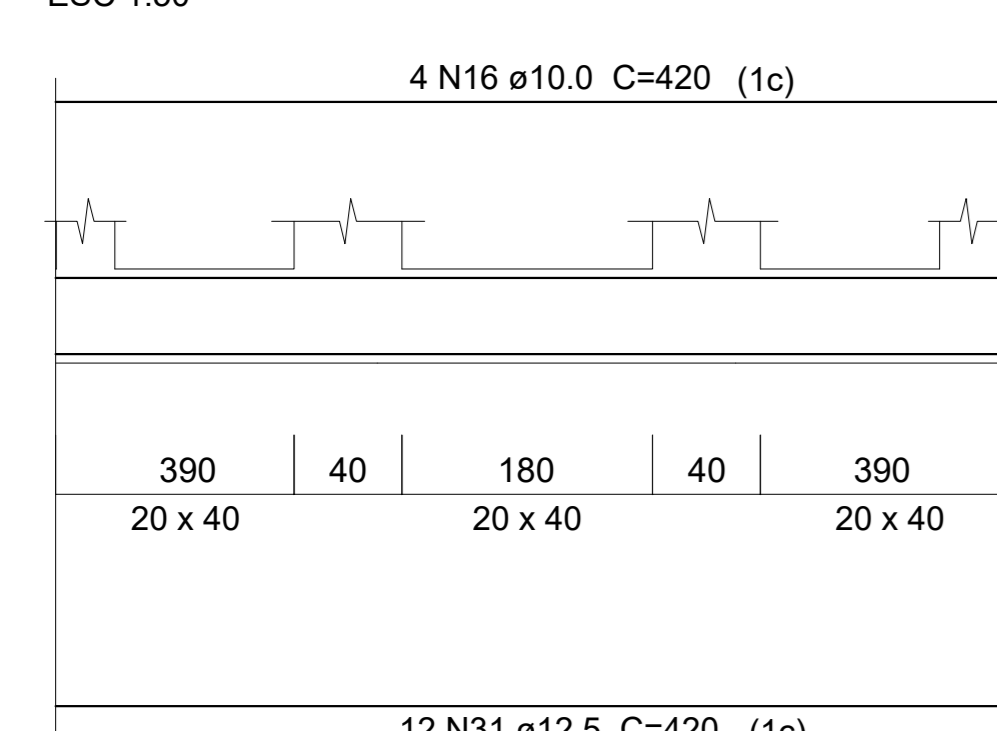
### V2 (20 x 30)



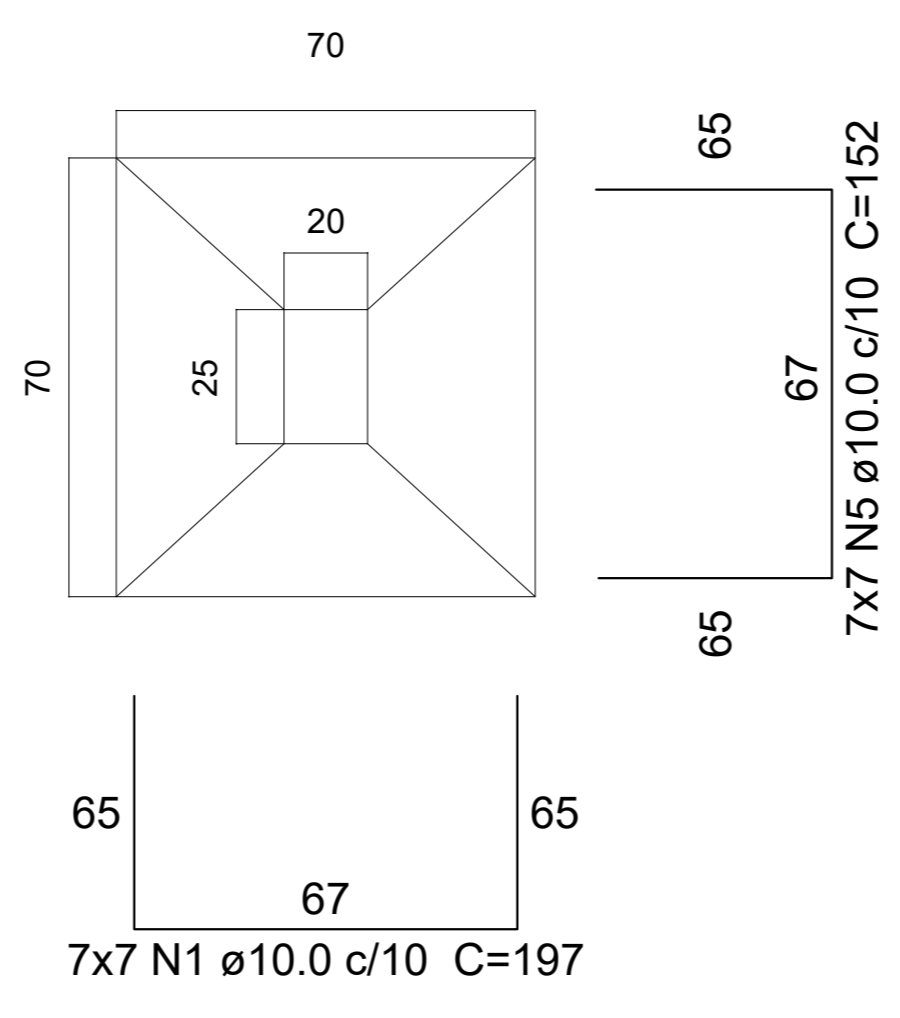
### V3=V4 (20 x 25)



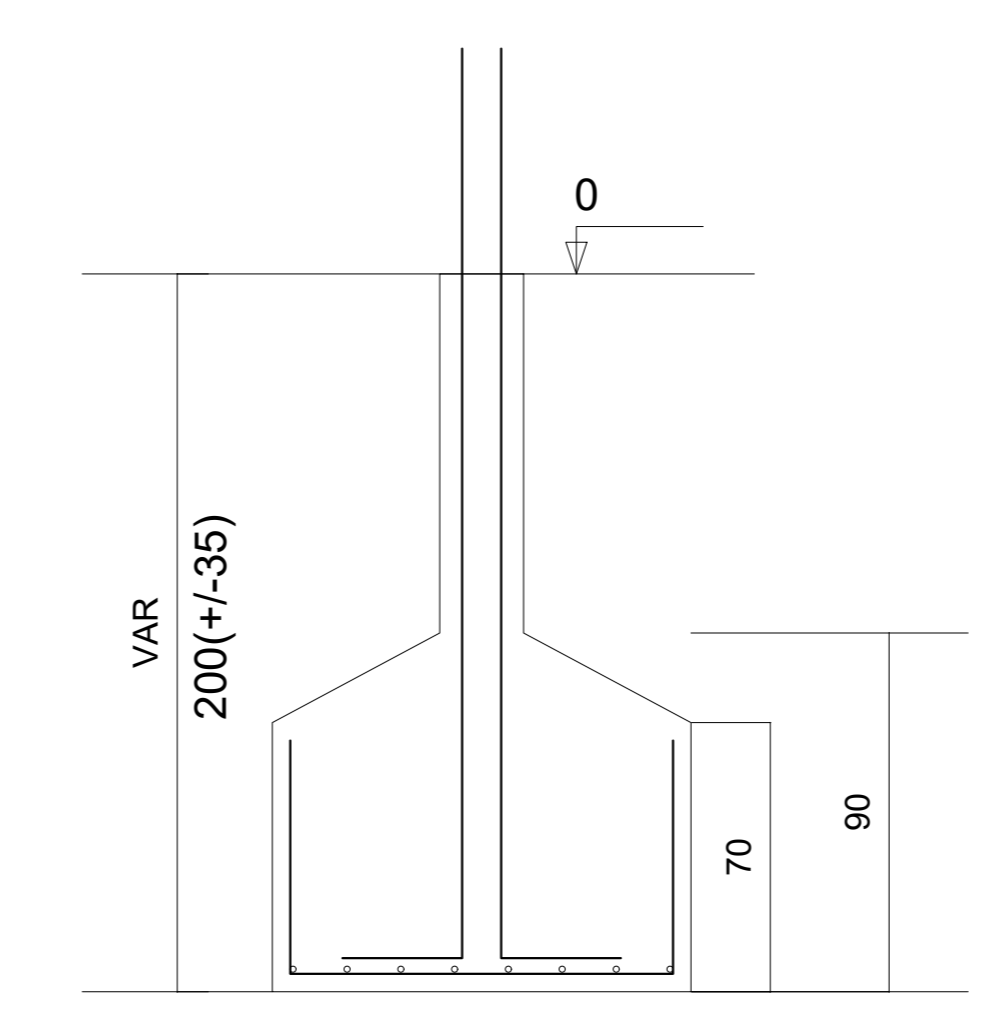
### V1 (20 x 40)



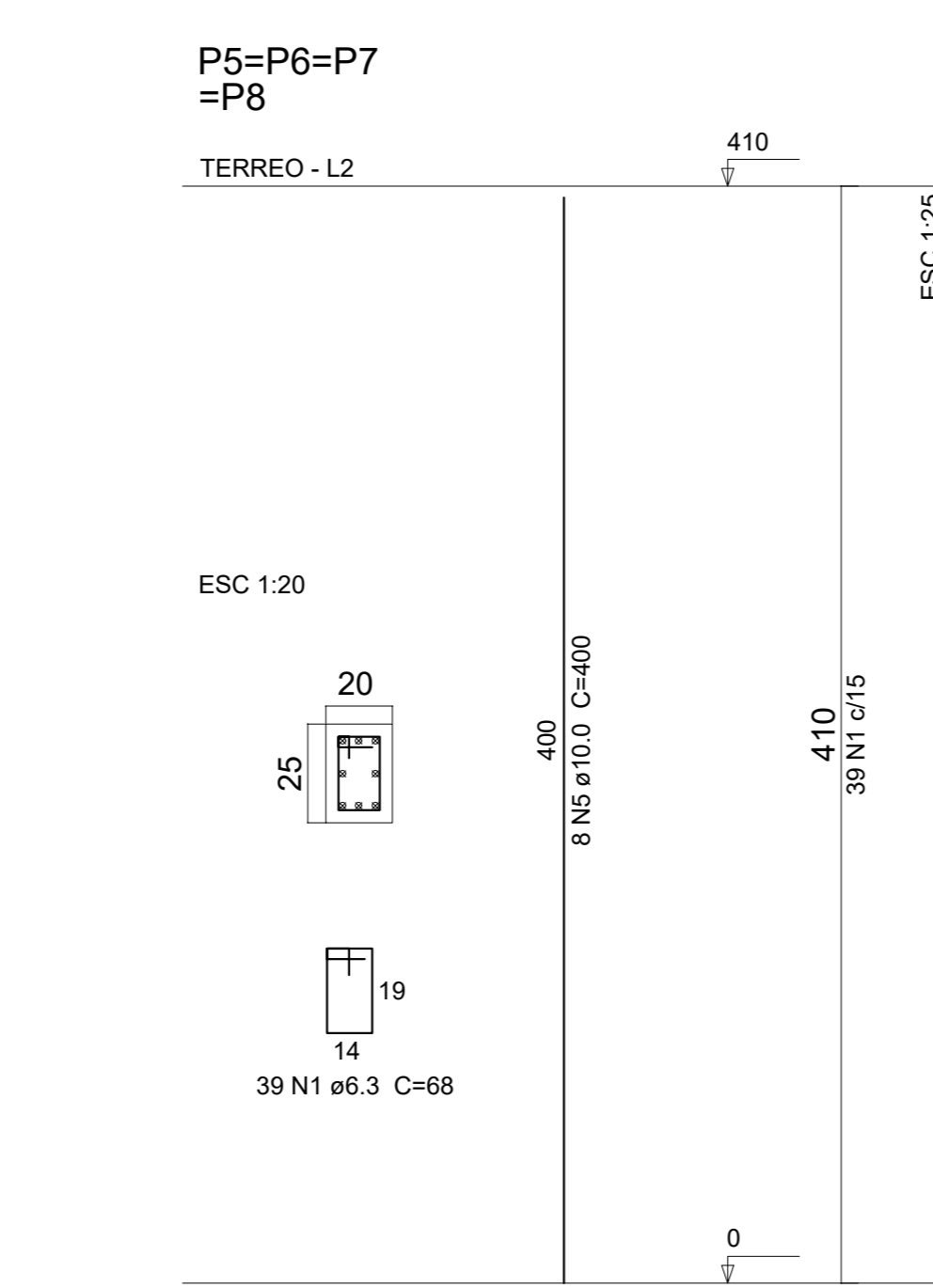
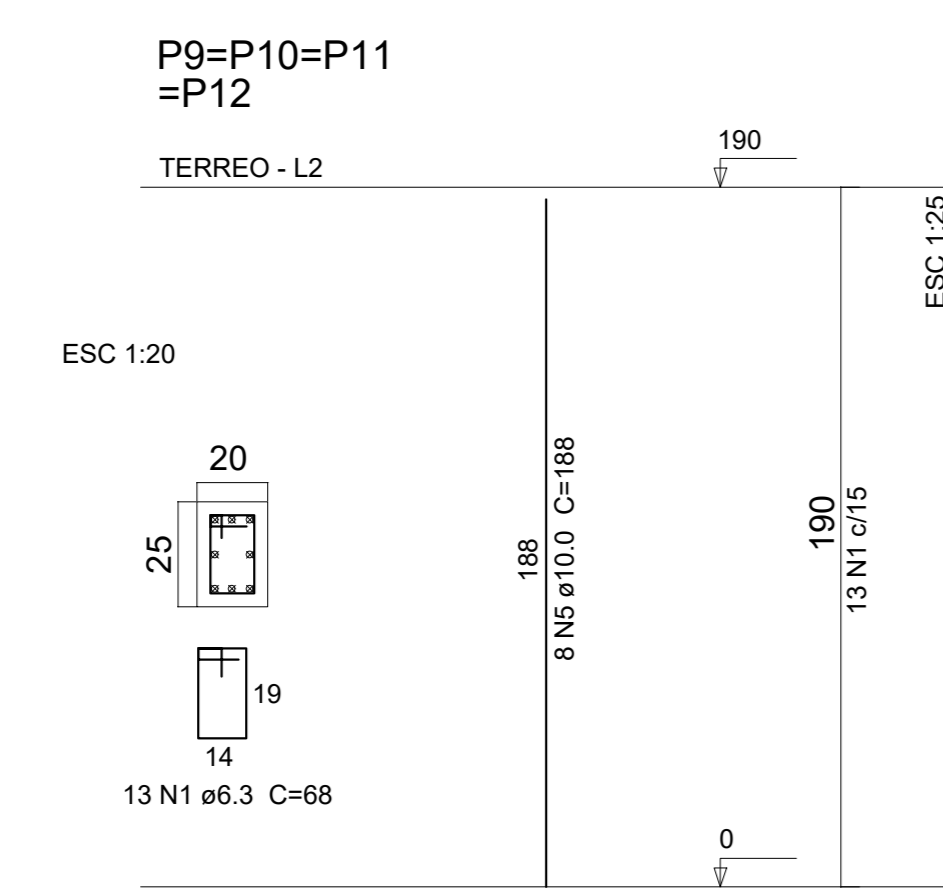
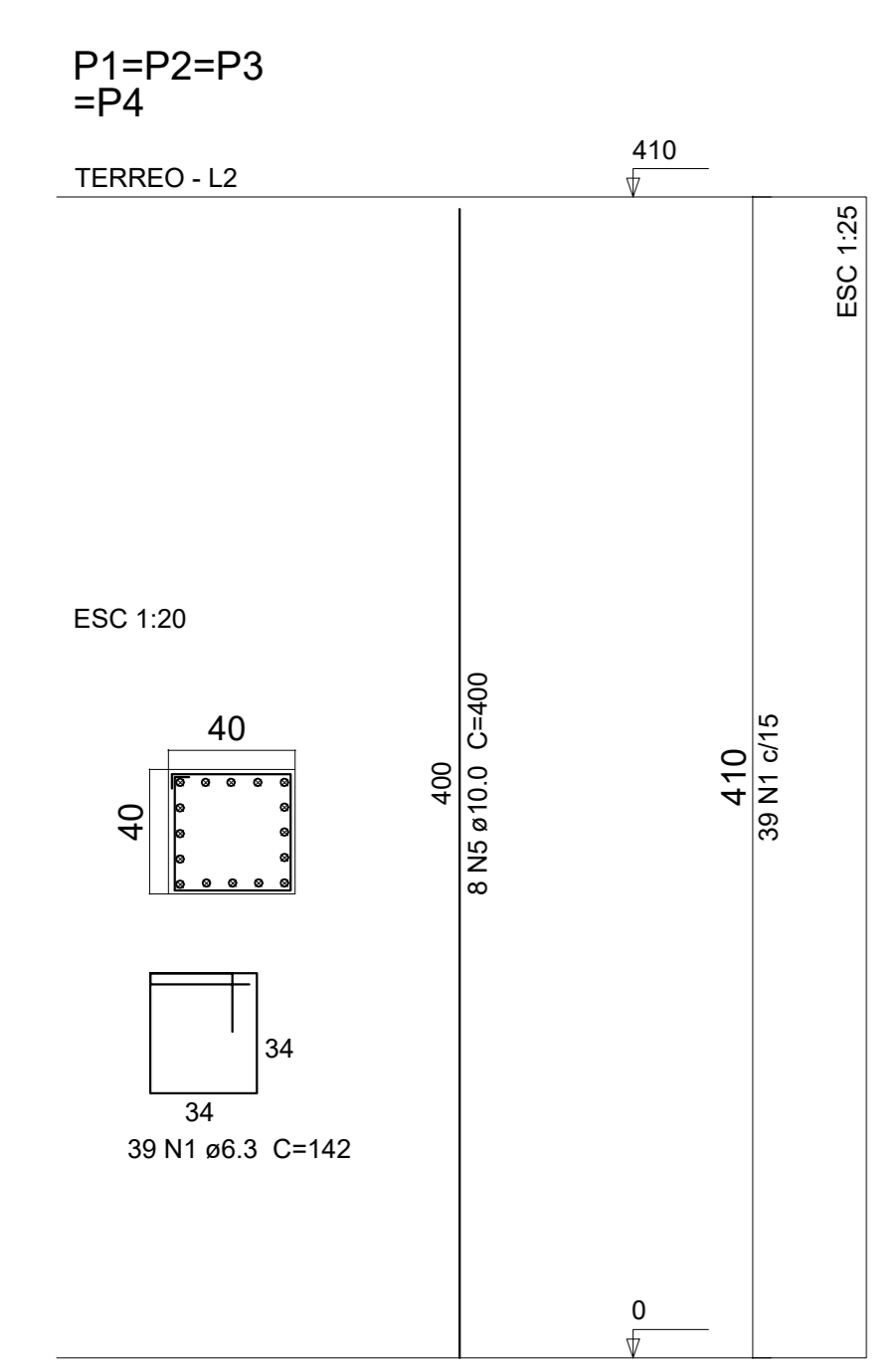
S1=S2=S3=S4=S5  
=S6=S7=S8  
PLANTA  
ESC 1:25



CORTE  
ESC 1:25



Solo com capacidade de suporte > 1.50 kgf/cm<sup>2</sup>  
Solo compactado sobre a sapata  
peso especifico > 1600.00 kgf/m<sup>3</sup>



<b>PROJETO ESTRUTURAL DE PONTE COM VIGA METALICA DE 10 M</b>	
PROPRIETÁRIO: : PREFEITURA MUNICIPAL DE SÃO JOÃO DAS MISSÕES - MG	
ENDEREÇO: ALDEIA INDEGENA RIACHÃO	
MUNICÍPIO - UF: SÃO JOÃO DAS MISSÕES - MG	04 / 07 / 2025
PREFEITURA MUNICIPAL DE SÃO JOÃO DAS MISSÕES	ESTRUTURAL
GERRARD TAYON FERREIRA LOPO	CREA: 289963 MG 02/02